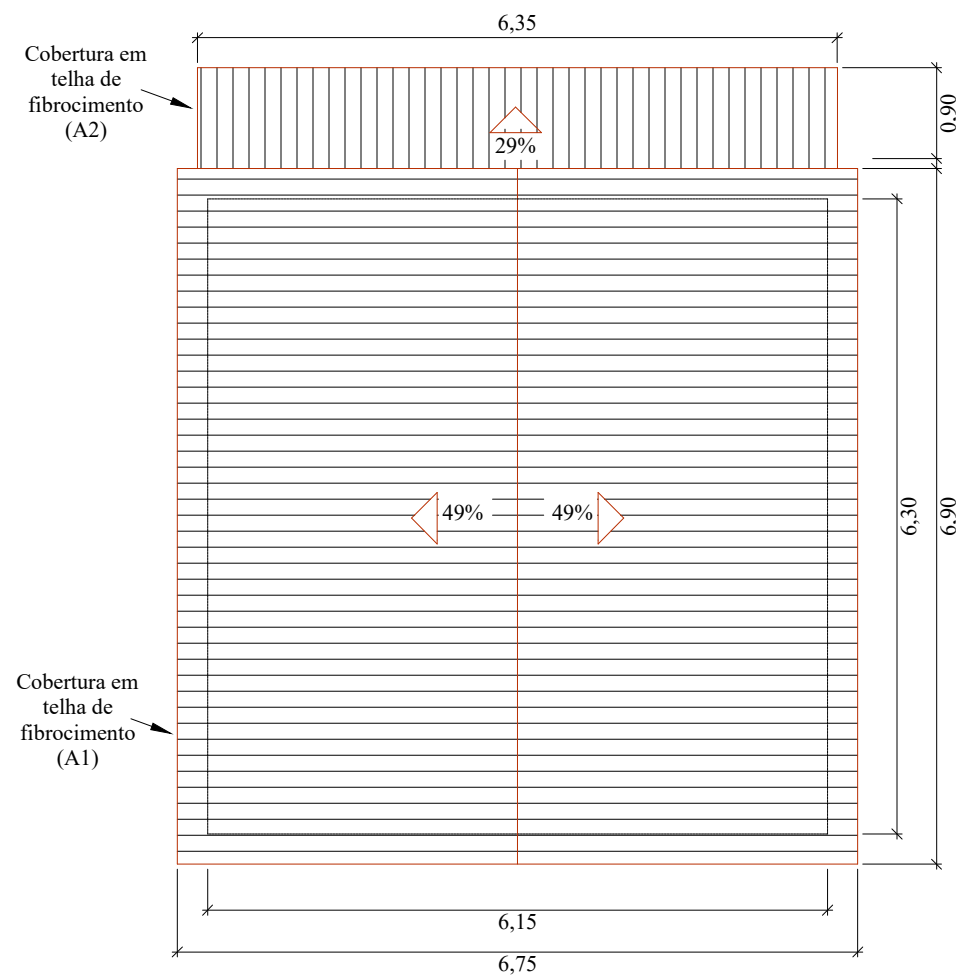


### 3 Telhado

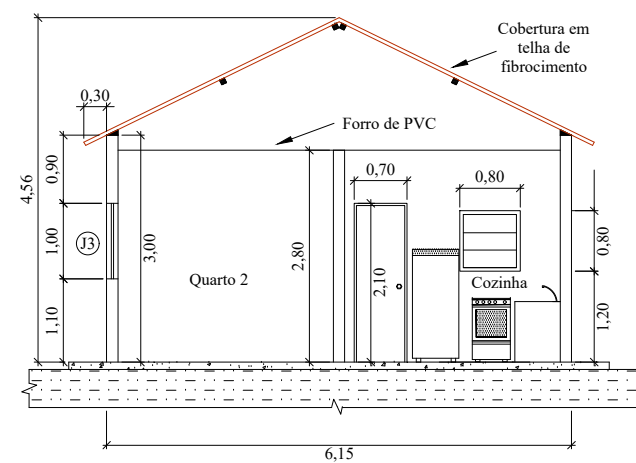
escala: 1/75



### ANEXO VIII

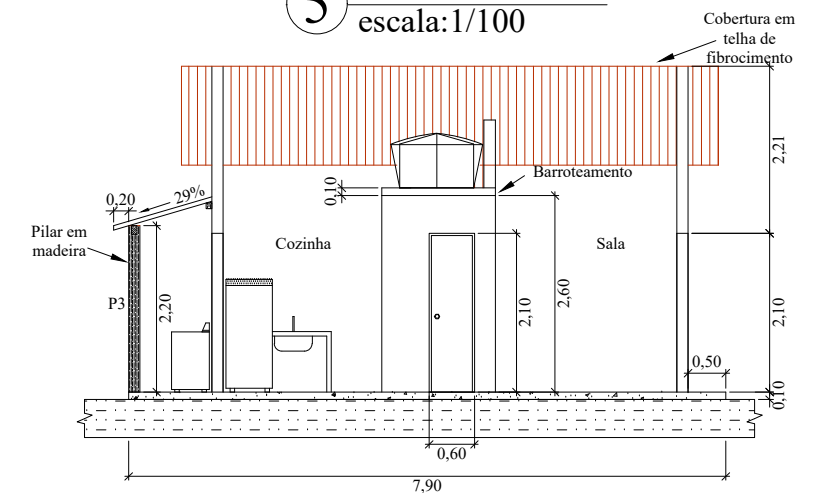
### 4 Corte B-B

escala: 1/100



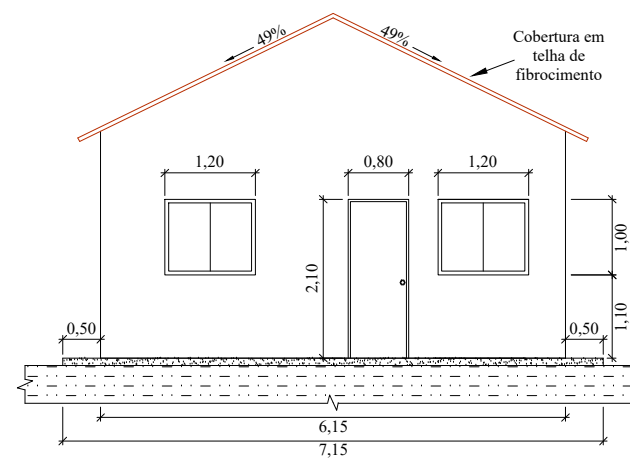
### 5 Corte A-A

escala: 1/100



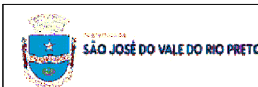
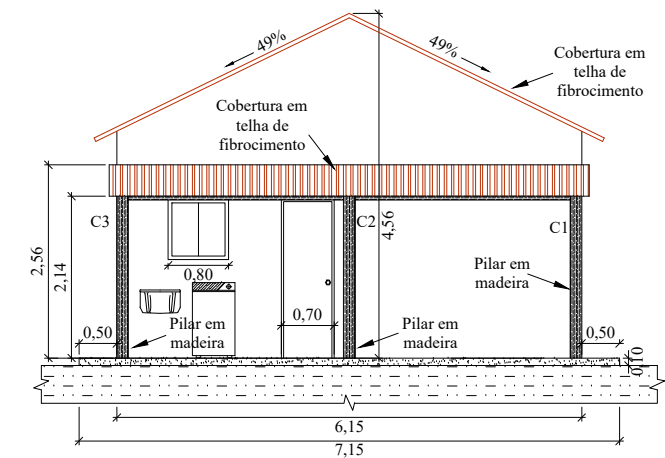
### 6 Fachada

escala: 1/100



### 7 Fachada

escala: 1/100



PROJETO BÁSICO - PROJETO DE CASAS POPULARES  
São José do Vale do Rio Preto - RJ

Secretaria de Planejamento e Gestão

ESCALA:  
INDICADA

PRANCHA:  
02/03

DATA:  
Maio/2022